



**FEBRUARY 2022**



**Social Media**

**@bradfordsendiass**



## **\*NEW\***

- \* We would firstly, like to start by giving a warm welcome to Heidi. Heidi is a new case-worker and will be working hard to advise and support parents/ carers.
- \* We have worked really hard to update our website. We have lots of new resources on there. Some of these include children and young people distance learning packs. We have also updated our useful contact page and would recommend to have a look on there.
- \* We now have our online training workshops that are now live on our website. You can watch these at a time that suits you.
- \* We have been doing some ongoing work with children and young people regarding transition. We want to hear the voice of children and young people. We have been attending schools/ colleges across Bradford to work with children and young people.

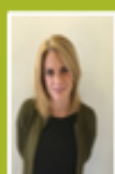
## Meet the Bradford SENDIASS team



Debbie  
Team manager



Joslyn  
Caseworker



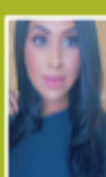
Imogen  
Caseworker



Humaira  
Participation and  
engagement  
worker/  
caseworker



Heidi  
Caseworker



Farzana  
Caseworker



## EHCP Workshop

We recently delivered our EHCP workshop on Zoom. We had a great outcome of parents and carers. Please keep an eye out on our social media for our upcoming events.

## SEMH Workshop

We delivered our SEMH workshops. Parent and carer's really liked this workshop. We had a lot of discussion around SEMH and the specialist teacher from the council gave parents some excellent practical examples.

Please take a look on our [website](#) at some of our online workshops.

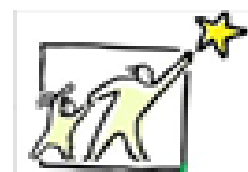
Or click the images to access them via YouTube.

## SEN Support



## SEND Tribunal





The SEND Tribunal makes decisions in appeals and claims in relation to children and young people's special educational needs and disability (SEND).

You may want to appeal against a decision relating to the Education, Health and Care Plan (EHCP) including:

- \* The Local Authority refuses to carry out an EHC needs assessment.
- \* The Local Authority refuses to issue an EHCP after an assessment
- \* You can also appeal the contents of section B, F or I in the EHCP.
- \* The local Authority refuses to amend an EHCP following a review or re-assessment.
- \* The Local authority have decided to cease to maintain the EHCP.

You can find more detailed information regarding appeals here:

<https://barnardosendiass.org.uk/bradford-sendiass/information-sheets-videos/>

### Where do I start?

Firstly, you need to check the date on the letter from the LA notifying you of their decision. You have **two months** from the date on this letter to lodge your appeal.

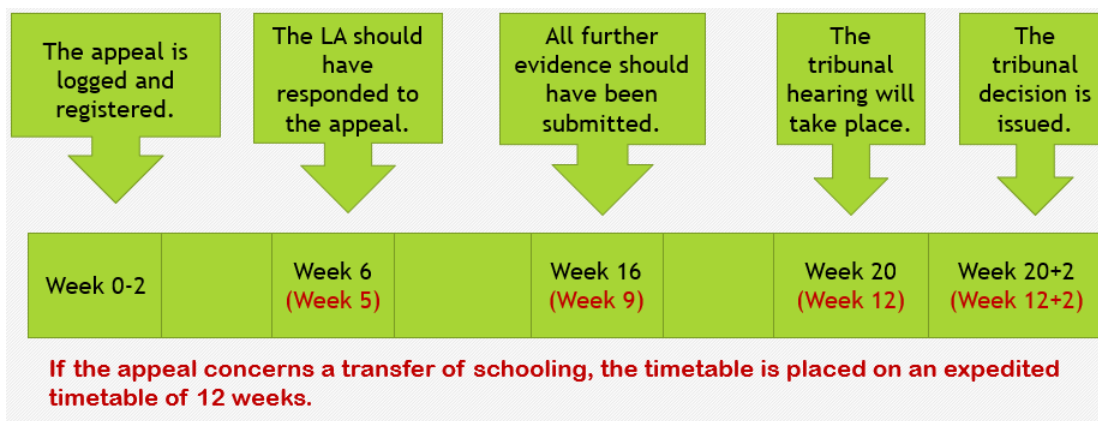
If you are still within the 2 month timeframe, arrange to speak to a mediation advisor. (you can skip this step if you are solely appealing the named school or type of school or only the health and care elements of the EHCP). You can either go to mediation or collect your mediation certificate to accompany your appeal form.

After considering mediation, you should then download, complete and send off the appeal form.

[www.gov.uk/government/publications/form-send35-special-educational-needs-and-disability-tribunal-appeal](http://www.gov.uk/government/publications/form-send35-special-educational-needs-and-disability-tribunal-appeal)

If you go to mediation and you still wish to appeal, you can still do so but then you have 1 month from the date of mediation to have your appeal lodged.

Here is a time-line to show what happens once you start the appeal process.



Make a note of the deadlines from the letter of registration you receive after lodging your appeal.



You can check if you are eligible for legal aid here:  
[www.gov.uk/check-legal-aid](http://www.gov.uk/check-legal-aid)



Hearings are now held online. Be prepared for it to last all day; have childcare covered.



## Dates for your diary

- SEND Tribunal coffee morning      2/3/22      (10am-11.30am)
- EHCP WORKSHOP-      24th March 2022      (10am-12pm)

Follow us on social media to stay updated @bradfordsendiass

### Casework Criteria

In order to be added to the waiting list for individual casework the enquiry must constitute a level 3 or 4 case. The criteria for this is as follows:

1. *There are multiple or complex issues to be addressed including:*
  - *Exclusions (permanent, unlawful or repeated),*
  - *SEND Tribunals or Disability Discrimination,*
  - *Child over 5 not in full time education (child out of school, part time timetables)*
  - *Ongoing formal complaints including ombudsman*
  - *School refusal (SEMH)*
2. *Or parent has additional needs which significantly affect their ability to manage the situation independently even with advice from the service, such as:*
  - *Learning difficulty*
  - *Ongoing mental health issues*
  - *Communication needs which cannot be supported by short term interventions*
3. *Or service user is a child or young person aged 0-25 with special educational needs or disability who has approached the service directly, and requires support to take part in processes and help to express their views and wishes.*

*Please note - We do not routinely attend meetings or reviews unless one or more of the above criteria applies.*